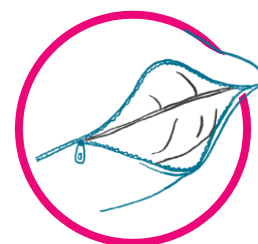
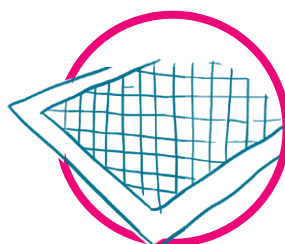
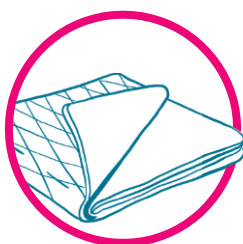
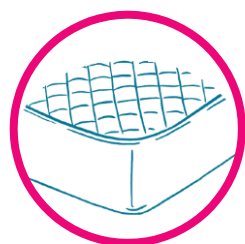


Bedding Protection

Main types of bedding protection



	Mattress Protectors	Reusable bed pads	Disposable bed pads	Doona Protectors
Product features	Washable fitted elasticized cover or fully encased cover with a zip.	Lightly padded quilted sheet with an absorbent layer and waterproof backing, only option with or without tuck in wings/flaps.	Ultra-absorbent quick drying disposable flat pad or small sheet.	Washable and reusable fully encased cover.
Other names	Mattress covers	Washable bed pads	Underlays, utility pads, under pads, dry pads	Quilt protectors
Main purpose	Waterproof or splash proof protection from urine.	Extra layer of protection from urine.	Extra layer of protection from urine.	Stops a doona from getting wet with urine.
Available sizes	Single, King Single, Double, Queen, King	Single, Double	Various sizes up to 1m x 1m	Single, King Single, Double, Queen, King
Advantages	<ul style="list-style-type: none"> Protects whole mattress, spans entire sleeping area Reduces odour from urine stains Washable up to 200 washes* Available from state based continence funding schemes 	<ul style="list-style-type: none"> A cost-effective alternative Reduces odour from urine stains Allows a partner to continue sharing a bed without getting wet Washable up to 200 washes* Available from state based continence funding schemes 	<ul style="list-style-type: none"> Convenient No washing required Rotatable Comes in a variety of sizes Travel friendly Prevents staining from faecal incontinence 	<ul style="list-style-type: none"> Extends life of a doona Saves time and laundry costs Reduces odour from urine stains Washable up to 200 washes*
Disadvantages	<ul style="list-style-type: none"> May change texture and comfort of a mattress e.g., may not feel as soft Can generate additional heat Some may disturb sleep with crinkle noises 	<ul style="list-style-type: none"> Can be bulky and may not fit in some washing machines May be too heavy to lift onto a clothesline Can only be dried in domestic home dryers* 	<ul style="list-style-type: none"> May need to replace even if unsoiled Slides around creating an uneven surface May get sweaty over time Limited availability from some state-based continence funding schemes 	<ul style="list-style-type: none"> Clumping can occur if in-built system unavailable to hold doona corners in place Extra weight can make you feel hotter May not feel as comfortable depending on material

* Or according to manufacturer guidelines

To purchase your bedding protection, you can visit www.ljcareaustralia.com.au for quick and reliable home delivery.

Why is bedding protection needed?

A mattress is an expensive purchase worth protecting. Bedding protection acts as a backup to protect your valuable mattress in case the absorbent pad or pant you are wearing to bed is insufficient and urine leakage occurs.

- Eliminates complete bedding changes
- Stops urine odours and stains from damaging bedding
- Keeps skin dry and comfortable for a better sleep
- Feel less cold in bed as moisture is drawn away from body
- Reduces embarrassment around bedwetting

Who needs bedding protection?

Anyone who cannot get out of bed in time to get to the toilet due to ill health or injury, or who needs additional protection from adult incontinence or child bedwetting.

How to get started

Product options

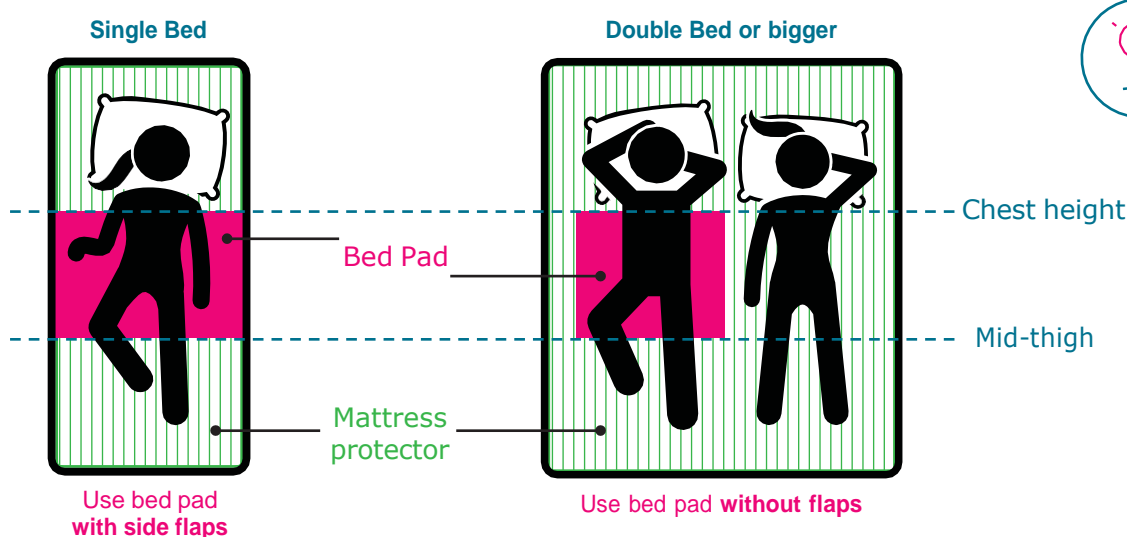
Think about why you need to buy bedding protection to help narrow down your choices.

- How much back up or extra protection are you looking for?
- What are your unique needs and requirements?
- Do you have any special needs or considerations?
- What can be easily cleaned?
- Whose bed is it for?
- What is your budget?

Capacity

Capacity (or absorbency) is the volume of urine a product can hold, often expressed as ml (milliliters). Always refer to the packaging for this information. As a guide, a bladder overnight can normally hold between 200ml to 800ml of urine. If your combined bedding protection holds more than 800ml, you are well prepared for an accidental leak overnight.

Bed pad position & flaps (wings or tuck-ins)



TIP

If you do not stay still while you sleep, a bed pad with flaps on the side can secure it under the mattress and keep it in place. Or choose a bed pad without flaps if you sleep with a partner who does not want to sleep on top of a bed pad.

Visit ljcareaustralia.com.au to buy your bedding protection